

LES SALINS

SCÈNE NATIONALE

DE MARTIGUES

FT version du 28/09/15

MAIN HOUSE TECHNICAL RIDER

ENGLISH VERSION



19 Quai Paul Doumer - BP 60075 - 13692 Martigues
Tel : 04 42 49 02 01 - Fax : 04 42 49 02 09 - administration@les-salins.net

WWW. LES-SALINS. NET

HOUSE

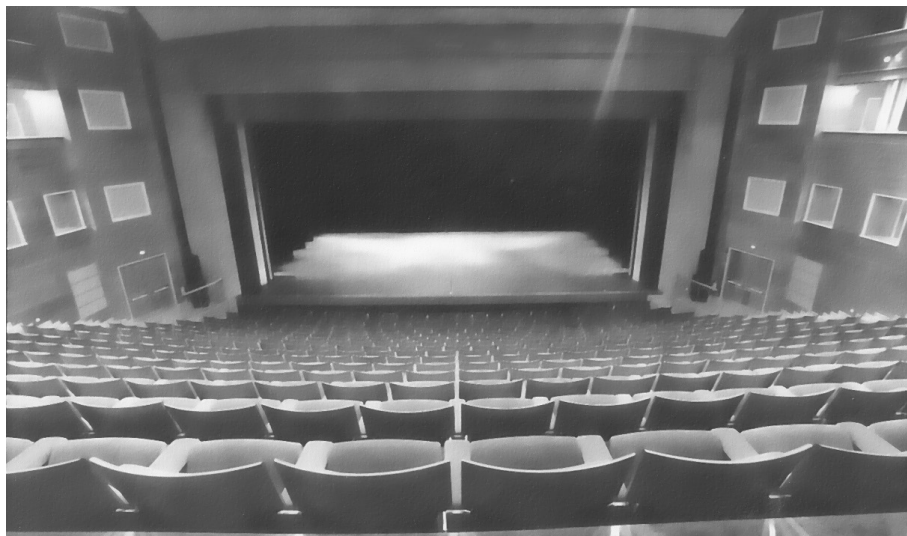
- 587 seats on tier
- 4 public access at upper and lower row level
- Acoustically treated ceiling

CATWALKS AND TECHNICAL GALLERY

- 2 catwalks : 7,20m and 14m from front of stage - Height : 11,50m from stage level
- 1 technical gallery - Height : 9m from stage level
- Height of the last row/stage level : 7m [ceiling rake : 47%]

CONTROL ROOM

It is situated in the back of the house – window opening in the middle.



House, seen from the control room

STAGE

STAGE HOUSE

- Variable frame width :from 14 to 16m
- Maximum stage house width from wall to wall : ..28m
- Mobile lighting bridge modifies frame height : ...from 6 to 8,50m
- Red velvet curtain behind fire curtain – Greek style opening
- Fire curtain in front of stage wooden stage
[1,20m x 1,20m traps- 1000 daN, removable]
- Stage rake :0% [flat]
- Height under grid :16,10m
- From back of fire curtain to last pipe (# 40) : ...13,50m [axis straight]

STAGE EQUIPMENT

- **Frame's mobile lighting bridge** [spotting light. : 6,5 à 9m]

- **3 services catwalks**
 - h. 6m : electricians' catwalk [stage right, back and left
 - h. 9m : operating gallery [stage right, back , left and front
 - h. 14m : loading gallery [stage right, back , left and front]

- **40 manual counterweighted pipes**
 - length : 24 m
 - maximum weight : 300 linear daN
 - command is possible from stage level or operating gallery

- **4 [2 + 2] motorised lateral pipes**
[length : 10m – max. weight : 500 linear daN– 12,50m from stage axis]

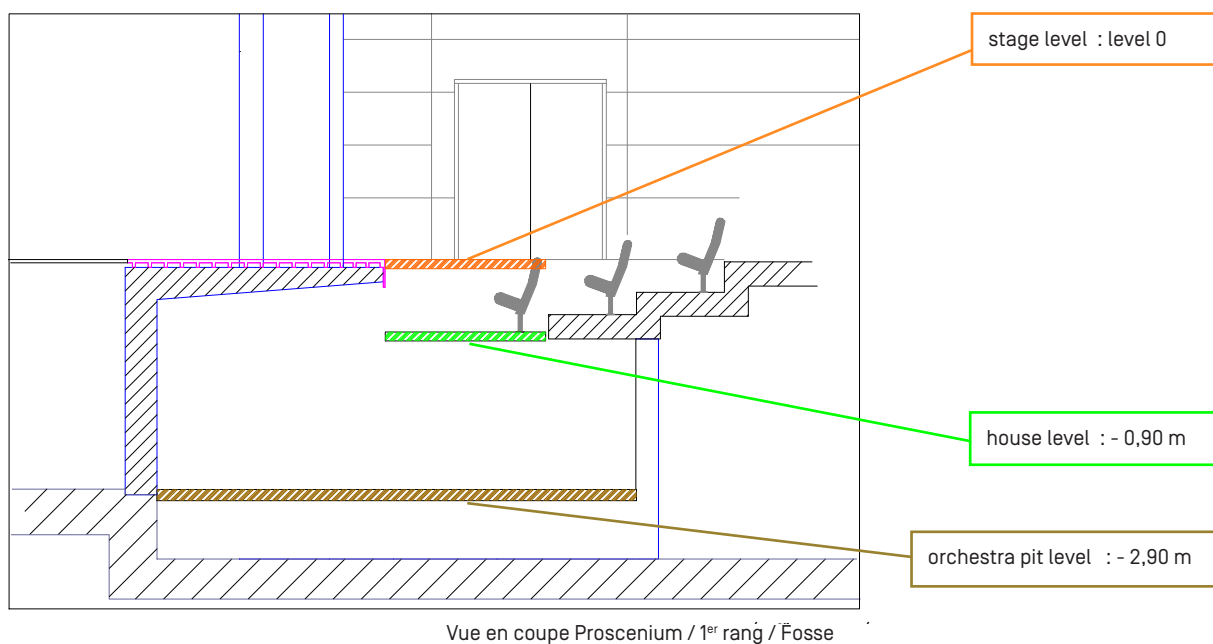
- **Black velvet**
 - 7 sets of black legs [4 x 10m]
 - 2 sets of black legs [2 x 10m]
 - 2 black borders [24m x 2m]
 - 4 black borders [24m x 3m]
 - 3 black borders [24m x 5m]
 - 2 large black border [10m x 10m]
 - 1 grey cyclorama [24 x 10m] and 1 white cyclorama [18 x 9m]

- **Black or white linoleum dance carpet can cover the whole stage**

FORE STAGE/ORCHESTRA PIT

Optional fore stage is made of 1,20 x1,20 m removable traps. Three levels are available :

- House level (the first row is then on it)
- Stage level (stage is then 36m² bigger ; front of stage is 2 m forward)
- Orchestra pit : 84m² - with acoustic treatment



BACKSTAGE

- wideness : 16m
- height : 5m
- depth : 6m



Vehicles have a direct access to back of stage by a double door straight on street level

- width : 4,80m
- height : 5,00m

LES SALINS

SCÈNE NATIONALE

DE MARTIGUES

19 Quai Paul Doumer - BP 60075 - 13692 Martigues
Tel : 04 42 49 02 01 - Fax : 04 42 49 02 09 - administration@les-salins.net

WWW.LES-SALINS.NET

LIGHT EQUIPMENT

BOARD AVAB Congo junior / Cobalt 7.1

DIMMERS

- 120 x 3 kW Bytesize dimmers
- 60 x 5 kW Bytesize dimmers
- Mobile Bytesize dimmers : 4 x [12x3 kW] et 2 x [6x5 kW] } BYTESIZE

Please note : No ballast or discharge light can be wired to our dimmers.
We have 3 dimmer triggable static relay for this purpose.

PROJECTEURS

Gels are to be provided by the performer.

50	Plano Convex	Juliat 310 SH	7/63°	1000 W halogen
30	Plano Convex	ADB C101	10/65°	1000 W halogen
24	Plano Convex	ADB C102	10/65°	2000 W halogen
2	Fresnel	LTM LT 5000	11/46°	5000 W halogen
2	Fresnel	ADB	8,6/54°	5000 W halogen
4	Profile	Juliat 611	8/15°	1000 W halogen
10	Profile	Juliat 613SX2	28/54°	1000 W halogen
15	Profile	Juliat 614S	13/42°	1000 W halogen
30	Profile	Juliat 614SX2	16/35°	1000 W halogen
24	Profile	ADB DS-205	13/36°	2000 W halogen
4	Profile	ADB DVW-205	30/54°	2000 W halogen
15	Profile	Juliat 710	6,5/12°	2000 W halogen
10	Low Tension	Juliat 843	6/9°	250 W ; 24V
4	Low Tension	FiatLux	-	500 W ; 24V
75	PAR 64	Kuppo	12x6° 14x7° 28x12°	1000W ; 240V Except VNSP : 110V
40	Assymetric Cycliod	ADB ACP 1001	-	1000W
10	Led Unit	Eurolite	RGB WFL	16 X30W COB
1	ACL Barr	Kuppo	-	8 x 250 w
2	Follow spot H.M.I.	Juliat	5,5/10,5°	1200W
8	Stands		1,40 to 2,70 m high	

LES SALINS

SCÈNE NATIONALE

DE MARTIGUES

19 Quai Paul Doumer - BP 60075 - 13692 Martigues
Tel : 04 42 49 02 01 - Fax : 04 42 49 02 09 - administration@les-salins.net

WWW.LES-SALINS.NET

SOUND EQUIPMENT

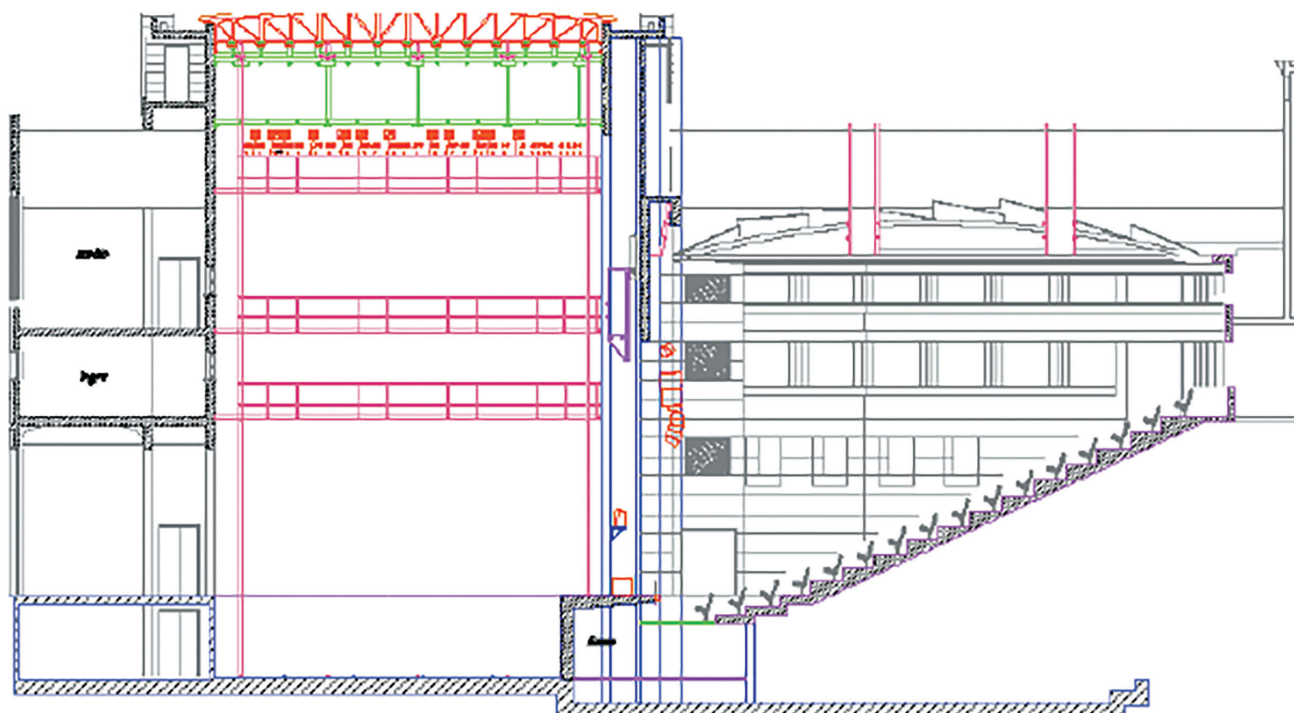
CONTROL ROOM [control can't be made from the house] : opening in the stage axis

- 1 Yamaha DM 1000 : 16 mono in [XLR]
8 jack in [card MY8 AD 96]
12 mono out [XLR]
- 1 Yamaha 01V 96i : 12 mono in [XLR]
8 jack in [card MY8 AD 96]
6 mono out [2 XLR & 4 jack]
- 1 Yamaha DME 24N processor [8 inputs / 16 outputs] available for all diffusion project
- CD players : 3 x Denon DN-C 640 [Auto Pause]
- MD players : 2 x Tascam MD-350 [Auto-Pause]
- Équaliseurs : 1 x Klark Teknik 2x31 bandes DN 360
1 x Klark Teknik 1x31 bandes
- Périphéraux : 1 x Recepter Wireless 2 chanel Shure UR4D
2 x Microphones Wireless Shure SM 58
2 x Micros DPA 4060 [black]
1 x Micro DPA 4060 [chair]
2 x Transmitter Wireless Shure UR1
- Micros : SM 58, SM 57, MD 421, SE300B [CK 91], KM 184, C535, D.I

DIFFUSION

- **FOH :** System L-Acoustics Line Array composed with :
6 x KARA + 2 SB18 each side
3 x KIVA center cluster mono
2 x 12 XT activ and Front Fill
2 x SB 18 left and right frame
4 x 5 XT near fills

Pa et processing LA8 et LA4
- **Extra speakers :** 8 x MPB 600
6 x MPB 400
8 x MPB 200 R
2 x SUB MPB 800
2 x SUB MPB 1200
- **PA system :** LAB GRUPPEN [C48 and C68]



SUPPLEMENT

- **Intercom :** 8 postes Techpro compatibles Clearcom

LES SALINS

SCÈNE NATIONALE

DE MARTIGUES

19 Quai Paul Doumer - BP 60075 - 13692 Martigues
Tel : 04 42 49 02 01 - Fax : 04 42 49 02 09 - administration@les-salins.net

WWW.LES-SALINS.NET

ACCOMODATIONS

DRESSING ROOMS

On the second floor :

- 2 for 5 persons
- 2 for 4 persons
- 2 for 3 persons

A large room close to the stage can be used as a dressing room for 10 persons.

Each dressing room's got mirrors, make-up lights, coatstands, shower and lavatories.

LAUNDRY

It is provided with 2 washing-machines, 2 driers, 2 ironing boards, 2 steam presses.
It communicates with stage and dressing rooms.

REHEARSAL ROOM

Size : 6 x 15 m

It is provided with mirrors, dance bars, and wooden dance floor

WORKING SCHEDULE

Schedule is studied between Theater's technical director and performer's stage manager.
Ten hours a day may be the maximum for each worker.

TECHNICAL CONTACT

Switchboard : 04.42.49.02.01
Fax : 04.42.49.02.09

Technical Director : **Serge MAURIN**
04.42.49.02.10
s.maurin@les-salins.net

Technical Director's assistant : **Thomas TOURNIER**
04.42.49.02.02
t.tournier@les-salins.net

Resident managers : 04.42.49.02.06
technique@les-salins.net

GENERAL INFORMATIONS

Requirements for special effects, special or extra equipment will be studied according to our possibilities and capacities.
The use of fireworks or flames is subject to our agreement.

One fireman on stage and one in the house during the show.
No derogation for the fire wall.

Yours,

Technical Direction

HOW TO GET THERE

- **COMING FROM FOS / ARLES / MONTPELLIER**
Before the motorway bridge (A55),
take the Martigues-Ferrières exit,
then follow the arrows to Centre-Ville - THÉÂTRE DES SALINS.
- **COMING FROM MARSEILLE / AIX / MARIGNAGNE**
After the motorway bridge (A55),
take the Martigues-Ferrières exit,
then follow the arrows to Centre-Ville - THÉÂTRE DES SALINS.
- **COMING FROM ISTRES**
Take Martigues Centre-Ville direction,
then follow theses arrows to Centre-Ville - THÉÂTRE DES SALINS.

